

THIS LAND IS YOUR LAND

Woody Guthrie

4/4 G7// C7// F /// G7// C7// F//// /

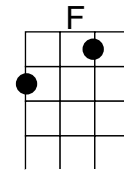
F Bb F
This land is your land, This land is my land
 C7 F

From California to the New York Island;

 Bb F//// /// (du-udd)
From the redwood forest. to the Gulf Stream waters

C7 F//// /

This land was made for you and me.



F Bb F
As I was walking that ribbon of highway

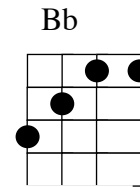
 C7 F
I saw above me that endless skyway

 Bb F//// /// (du-udd)

I saw below me that golden valley

C7 F//// /

This land was made for you and me



F Bb F
'The Big Sky Country' of dear Montana,

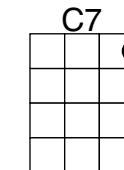
 C7 F
Big Rocky Mountains, rich river valleys

 Bb F//// /// (du-udd)

Wide open prairies and alpine hi -king trails,

C7 F//// /

This land was made for you and me.



F Bb F
In the middle of the ocean is fair Hawaii

 C7 F
From the lush rainforest, to the sandy beaches

 Bb F//// /// (du-udd)

Volcano mountains 'n deep green valleys

C7 F//// /

This land was made for you and me.

(MT verse by Grace Kwon and Clara Goto

HI verses by Clara Goto)

(Go back to first verse to end)